

Two-Output Weather Resistant Surface Mount Keypads



AC-Q41SB

Main Features:

- ◇ 500 users over the 2 outputs
- ◇ Metal structure, anti-vandal, more secure, weather resistant design.
- ◇ Luminescent backlit Keypad and active LED control.
- ◇ Programmable luminescent backlit Keypad and active LED control. (AC-Q41SB only)
- ◇ Two Tri-Coloured LED for mode and door indicators.
- ◇ Protective properties: IP65 fully-potted.
- ◇ Integrated keypad heater preventing key freezing (AC-Q41SB only)
- ◇ Low Standby current of 75mA (with keypad heater Off)
- ◇ Low operation current of 135mA (with keypad heater Off)
- ◇ Two-relay operation. Ideal for Main Vehicle and separate Pedestrian Access Control
- ◇ Pulse mode, toggle mode. Toggle Mode ideal for keeping pedestrian or vehicle gate open for extended periods.
- ◇ High Security PIN Option i.e. PIN Length 4-8 Digits
- ◇ With anti-demolition alarm function; This feature can be used to disable the remote control of the gate from the key pad if the keypad is removed from the wall / gatepost.
- ◇ Product Certification: CE

Specifications:

- ◇ Operating Voltage: 12-24V dc/12-24V ac
- ◇ Adjustable Door Relay Time: 1-99s on Output 1 or 2 or toggle (latch) on output 2
- ◇ Static Current: ≤35mA
- ◇ Operating Temperature: -20⁰~60⁰C
- ◇ Operating Humidity: 0-95% non-condensing
- ◇ Lock Output Load: 2A
- ◇ Alarm Output Load: 2A
- ◇ Antistatic: 15KV
- ◇ Environment: Conform to IP65
- ◇ Cable Length: 60cm
- ◇ LED Indicators Two tri-colour LED (Mode and Door)
- ◇ Dimensions:
AC-Q41SB — L120mm×W76mm×H27mm
AC-G43 — L137mm×W44mm×H29mm



AC-G43

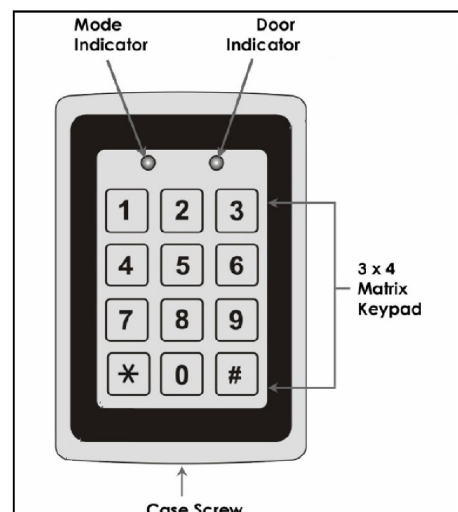
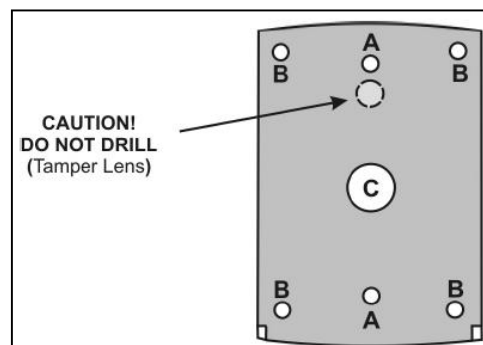


Installation

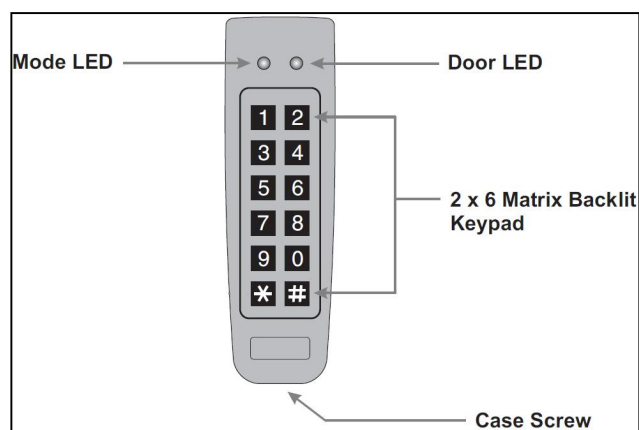
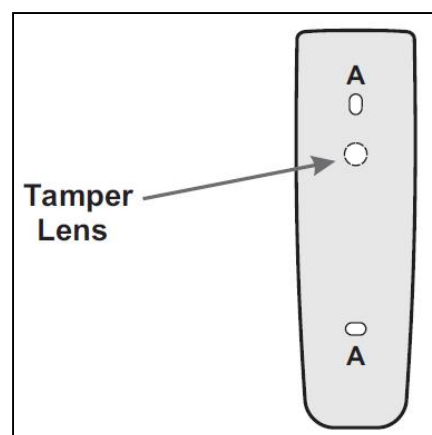
- > Prior to starting, select the location where the keypad is to be mounted
- > Open the keypad by loosening and removing the case security screw at the bottom using the keypad
- > Depending on the type of installation, flush box or surface mount, drill the respective holes in the rear cover (see Drilling Template for details). For flush box mounting, drill 2 holes marked 'A'. For flat surface mount, drill four holes marked 'B' (AC-Q41SB only).
- > Use the provided drilling template to accurately locate and drill the required holes in the wall.
- > Use the hardware provided to mount the back plate on the wall or flush box. Be sure to route the wiring via the large centre hole 'C' in the back plate. Check for level.
- > Wire the keypad as per Keypad Connections below
- > Once wired, replace the keypad back onto its back plate and screw it to the back plate.
- >

Drilling Templates and Keypad Layouts

AC-Q41SB



AC-G43



AC-Q41SB & AC-G43 Keypad Connections

Colour	Description
Red	V input (ac /+ dc)
Black	Ground (ac / - dc)
Green	REX/BL (REX button to ground)
White	In/Monitor (In/monitor to V)
Purple	Lock (Output 1) Com
Gray	Lock (Output 1) N.O.
Brown	Lock (Output 1) N.C.
Blue	Aux (Output 2) Com
Yellow	Aux (Output 2) N.O.
Orange	Aux (Output 2) N.C.

- > Both Output Relays can operate in 'Pulse' mode with programmable pulse length, (up to 99 seconds) suitable for opening a gate or a door.
- > Relay 2 can be configured in 'toggle' (latch) mode suitable for keeping a gate or door open for extended periods. A valid code for this output would need to be presented to unlatch this relay.
- > Lockout Function. If the Keypad is presented with wrong codes consecutively for up to 9 (programmable) times, the keypad goes into lockout mode. During Lockout mode, the Keypad is deactivated so no codes can be entered. The lockout time is selectable from 10 to 990 seconds

GATE DRIVE SOLUTIONS LTD.

www.gatedrivesolutions.co.nz Phone: 09 419 5483

The Information contained in this document is subject to change without notice. 17 May 2017